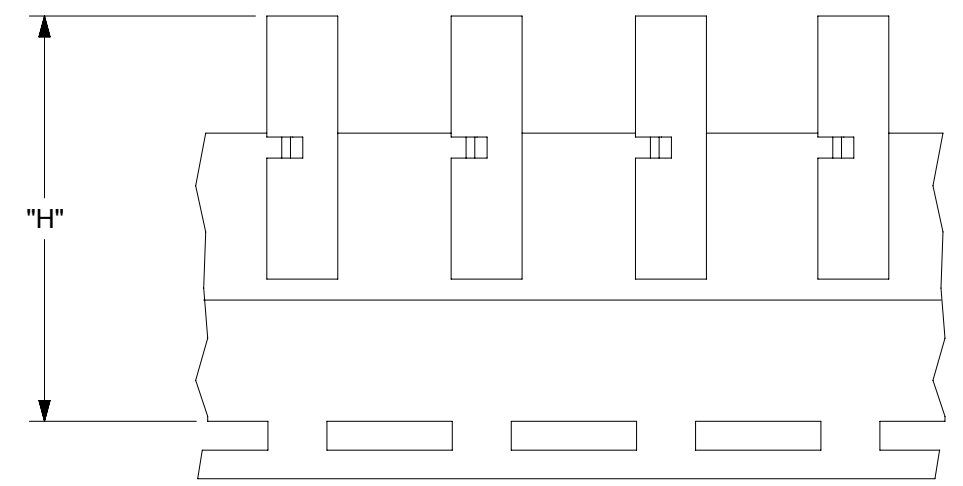
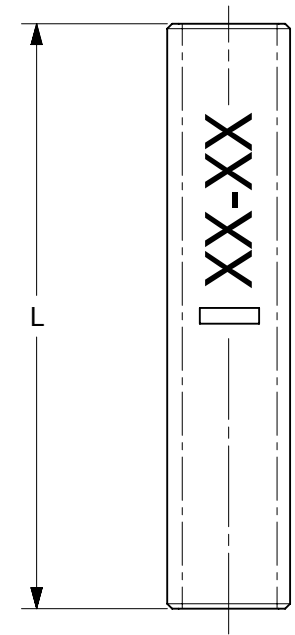
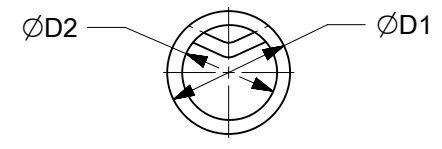


MATERIAL NO.	ENGINEERING NO.	D1 MAX	D2 MAX	L MAX	H NOMINAL	WIRE RANGE AWG	DESCRIPTION
192030384	19203-0384	.14/3.6	.05/1.2	.627/15.92	-----	22-18	LOOSE
192030385	19203-0385	.17/4.3	.07/1.9	.627/15.92	-----	16-14	LOOSE
192030386	C-S-146 (P)	.23/5.8	.12/3.0	.627/15.92	-----	12-10	LOOSE
192030523	19203-0523	.14/3.6	.05/1.2	.627/15.92	1.218/30.94	22-18	TAPE
192030479	19203-0479	.17/4.3	.07/1.9	.627/15.92	1.218/30.94	16-14	TAPE
192030480	19203-0480	.23/5.8	.12/3.0	.627/15.92	1.218/30.94	12-10	TAPE

(A2)



PARTS ON TAPE

- NOTES:
1. MATERIAL: STEEL .031/0.80 THICK REF.
 2. FINISH: NICKEL PLATED WITH OPTIONAL COPPER FLASH UNDERPLATING, IS ALLOWED FOR IMPROVED ADHESION.
 3. PART IS ROHS COMPLIANT.

(A2)

FUNCTIONAL SYMBOLS	THIS DRAWING CONTAINS INFORMATION THAT IS PROPRIETARY TO MOLEX ELECTRONIC TECHNOLOGIES, LLC AND SHOULD NOT BE USED WITHOUT WRITTEN PERMISSION										
	DIMENSION UNITS		SCALE		CURRENT REV DESC: REMASTERED IN ECTR AND UPDATED NOTE						
	IN/MM		1:1								
	GENERAL TOLERANCES (UNLESS SPECIFIED)										
DIVISIONAL SYMBOLS	4 PLACES		±		MM		±		INCH		
	3 PLACES		±		MM		±		INCH		
	2 PLACES		±		MM		±		INCH		
	1 PLACE		±		MM		±		INCH		
0 PLACES		±		MM		±		INCH			
ANGULAR TOL		±	°								
DRAFT WHERE APPLICABLE MUST REMAIN WITHIN DIMENSIONS					THIRD ANGLE PROJECTION		DRAWING		SERIES		
							B-SIZE		19203		
DOCUMENT STATUS			P1		RELEASE DATE		2022/06/02		15:20:34		
EC NO: 708789			DRWN: PAWANC		2022/05/10		2022/06/01		2022/06/02		
CHKD: DMYRICK			APPR: JMACNEIL		INITIAL REVISION:		2005/04/07		2005/04/07		
DRWN: DMYRICK			APPR: RDEROSS		DOCUMENT NUMBER		SD-19203-015		PSD 001 A2		
MATERIAL NUMBER			CUSTOMER		SHEET NUMBER		SEE CHART		GENERAL MARKET 1 OF 1		