



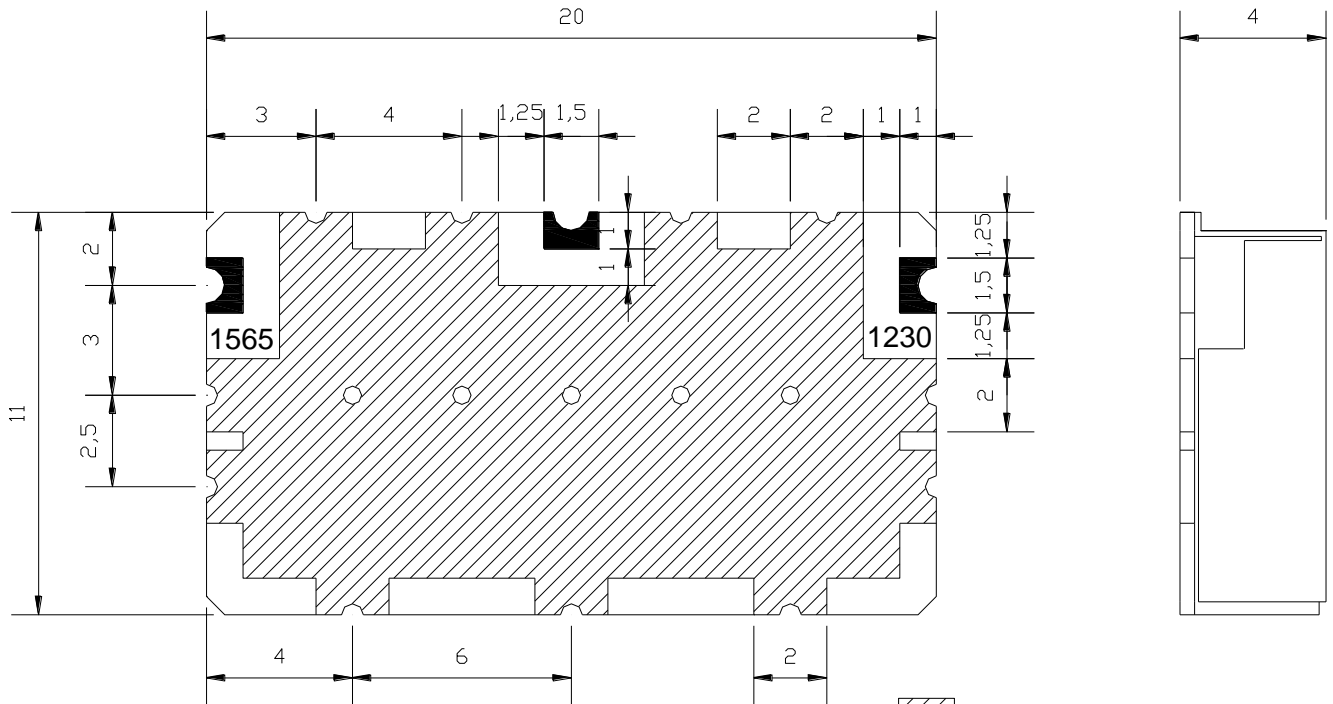
<u>Characteristics</u>	<u>Band 1</u>	<u>Band 2</u>
Passband:	1170-1290 MHz	1515-1615 MHz
Bandwidth:	Fo +/- 60 MHz	Fo +/- 45 MHz
Passband Return Loss:	14 dB min	14 dB min
Passband Insertion Loss:	2.0 dB max	2.0 dB max
Passband Ripple:	0.5 dB max	0.5 dB max
Input / Output Impedance:	50 Ohms	50 Ohms
Isolation:	35 dB	35 dB
Power Handling:	3 W	3 W

<u>Mechanical</u>	
Mounting Method:	SMT
Dimensions:	20 x 11 x 4 mm

<u>Environmental</u>	
Operating Temperature:	-30 to +85 deg.C
Storage Temperature:	-50 to +90 deg.C

This product is RoHs compliant.

Outline Drawing:



GROUND
 IN/OUT PORT

UNIT : mm

TOLERANCE : +/- 0.3



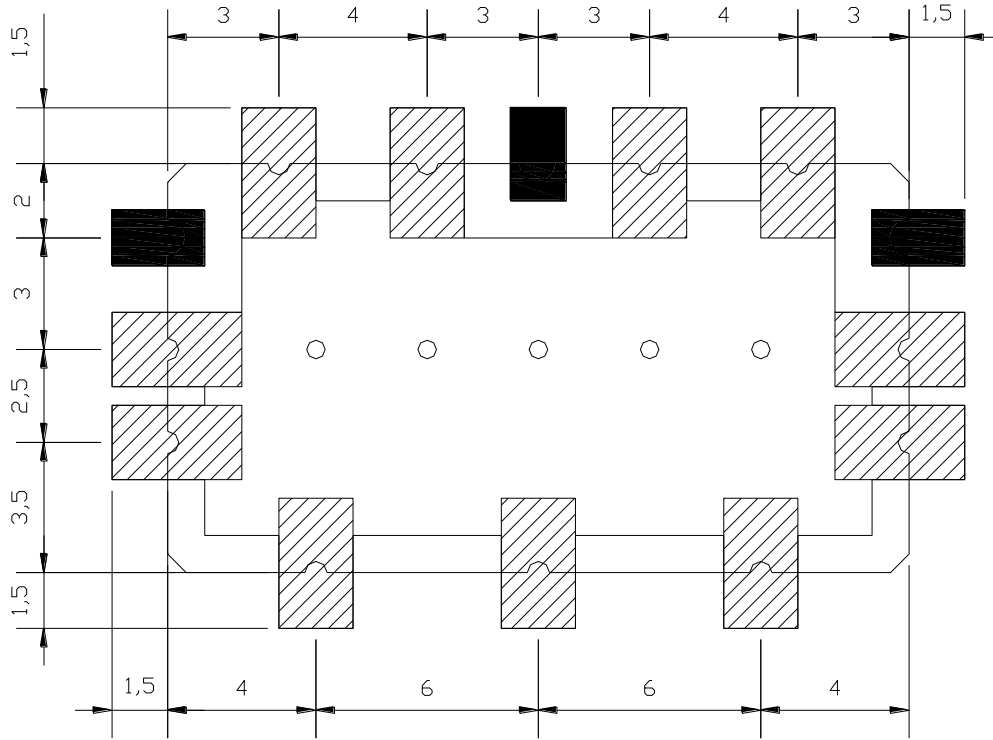
ANATECH ELECTRONICS INC
RF & Microwave Filters & Products



1230/1565 MHz Ceramic Duplexer

Part Number: AM1230-1565D1012



Land Pattern:



-  GROUND
-  IN/OUT PORT
- UNIT : mm
- TOLERANCE : +/- 0.3