

CAPACITOR MOUNTS

ECM: Electrolytic Capacitor Mounts

ECI: Electrolytic Capacitor Insulators



ECM: Electrolytic Capacitor Mounts

Color: Natural

- Works with 5mm through 35mm industry standard electrolytic capacitors
- Insulates and protects leads
- Prevents shorting under shock and vibration

Material Specifications:

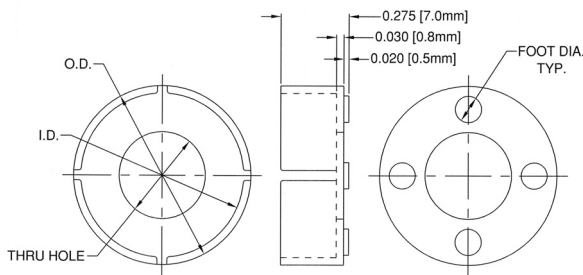
Nylon, per ASTM D4066 PA111,
UL Rated 94V-2

Standard Drawing Tolerances:

(unless otherwise indicated)

Fractions: $\pm 1/64$ (0.4) .XX = ± 0.01 (0.25)
.X = ± 0.10 (2.5) .XXX = ± 0.005 (0.13)

Oxygen Rating Index: Over 28%



Part No.	EC Type	I.D.	O.D.	Thru Hole	Foot Dia.	Price Code
ECM-1	5	.227 (5.8)	.287 (7.3)	.125 (3.2)	.060 (1.5)	A
ECM-2	6-6.3	.273 (6.9)	.333 (8.5)	.150 (3.8)	.070 (1.8)	B
ECM-3	8	.345 (8.8)	.405 (10.3)	.225 (5.7)	.070 (1.8)	F
ECM-4	10	.424 (10.8)	.484 (12.3)	.250 (6.4)	.100 (2.5)	F
ECM-5	12.5-13	.542 (13.8)	.602 (15.3)	.350 (8.9)	.105 (2.7)	G
ECM-6	16	.660 (16.8)	.720 (18.3)	.350 (8.9)	.106 (2.7)	G
ECM-7	18	.738 (18.7)	.798 (20.3)	.350 (8.9)	.106 (2.7)	H
ECM-8	20	.817 (20.8)	.877 (22.3)	.441 (11.2)	.118 (3.0)	H
ECM-9	22	.896 (22.8)	.956 (24.3)	.449 (11.4)	.118 (3.0)	I
ECM-10	25	1.008 (25.6)	1.074 (27.3)	.547 (13.9)	.138 (3.5)	I
ECM-11	25.5	1.030 (26.2)	1.090 (27.7)	.547 (13.9)	.138 (3.5)	J
ECM-12	30	1.210 (30.5)	1.270 (32.3)	.645 (16.4)	.138 (3.5)	K
ECM-13	35	1.410 (35.8)	1.470 (37.3)	.645 (16.4)	.138 (3.5)	C



ECI: Electrolytic Capacitor Insulators

Color: Clear

- Self-retaining
- Insulates and allows circuitry beneath capacitor
- Transparent, tough and temperature resistant

Material Specifications:

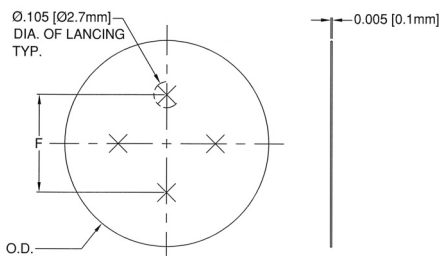
Dupont, Mylar EL-21 with
UL Rated 94V-2

Standard Drawing Tolerances:

(unless otherwise indicated)

Fractions: $\pm 1/64$ (0.4) .XX = ± 0.01 (0.25)
.X = ± 0.10 (2.5) .XXX = ± 0.005 (0.13)

Oxygen Rating Index: Over 28%



Part No.	Case Style	O.D. $\pm .005$	F	Use With
ECI-1	I	.710 (18.0)	.394 (10.0)	30
ECI-2	II	.830 (21.0)	.394 (10.0)	22, 25, 35