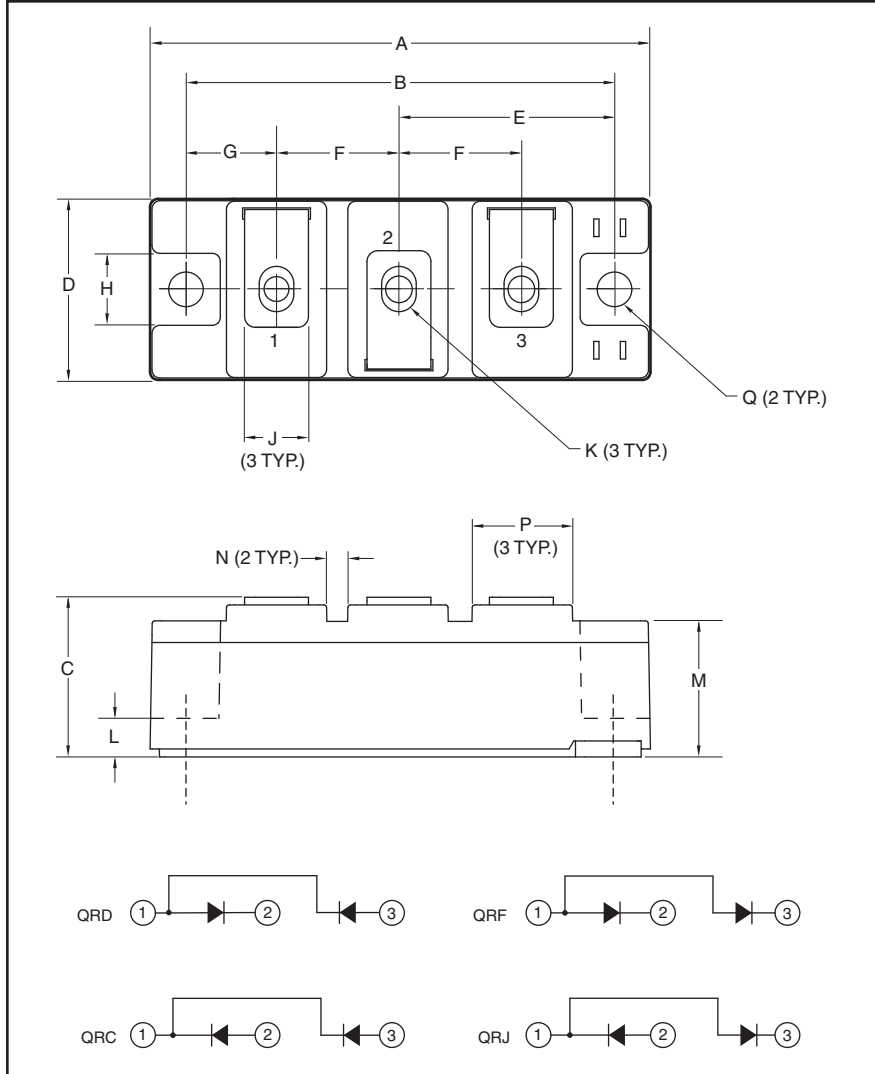


## Super Fast Recovery Diode Modules

### 210 Amperes/1200 Volts


**Description:**

Powerex Super Fast Recovery Dual Diode Modules are designed for use in applications requiring fast switching. The modules are isolated for easy mounting with other components on common heatsinks.

**Features:**

- Super Fast Recovery Time
- RoHS Compliant
- Isolated Mounting
- Metal Baseplate
- Low Thermal Impedance
- 2500V Isolating Voltage

**Applications:**

- Free Wheeling
- Welding and Plasma Cutting Machine

**Outline Drawing and Circuit Diagram**

Dimensions	Millimeters
A	94
B	80
C	30
D	34
E	40
F	23
G	17
H	13

Dimensions	Millimeters
J	12
K	M6
L	7.5
M	25.4
N	4
P	19
Q	6.5 Dia.

**QR\_1230R30**  
**Super Fast Recovery Dual Diode Modules**  
 210 Amperes/1200 Volts

**Absolute Maximum Ratings,  $T_j = 25\text{ }^\circ\text{C}$  unless otherwise specified**

Ratings	Symbol	QRD1230R30 QRC1230R30 QRF1230R30 QRJ1230R30	Units
Repetitive Peak Reverse Blocking Voltage	$V_{RRM}$	1200	Volts
Non-Repetitive Peak Reverse Blocking Voltage	$V_{RSM}$	$V_{RRM} + 100$	Volts
DC Current, $T_C = 80^\circ\text{C}$ (Resistive Load)	$I_{F(DC)}$	210	Amperes
Peak Half Cycle Non-repetitive Surge Current ( $t = 8.3\text{mS}$ , 100% $V_{RRM}$ Reapplied)	$I_{FSM}$	2550	Amperes
$I^2t$ for Fusing for One Cycle ( $t = 8.3\text{mS}$ , 100% $V_{RRM}$ Reapplied)	$I^2t$	27,000	$\text{A}^2\text{sec}$
Operating Junction Temperature	$T_j$	-40 to 150	$^\circ\text{C}$
Storage Temperature	$T_{stg}$	-40 to 150	$^\circ\text{C}$
Maximum Mounting Torque, M6 Mounting Screw	—	26	in-lb
Maximum Mounting Torque, M6 Terminal Screw	—	26	in-lb
Module Weight (Typical)	—	180	Grams
V Isolation (60 Hz, Circuit to Base, All Terminals Shorted, $t = 60\text{ sec}$ )	$V_{RMS}$	2500	Volts

**Electrical Characteristics,  $T_j = 25\text{ }^\circ\text{C}$  unless otherwise specified**

Characteristics	Symbol	Test Conditions	Min.	Typ.	Max.	Units
Reverse Leakage Current	$I_{RRM}$	Rated $V_{RRM}$	—	—	1.0	mA
On-State Voltage	$V_{FM}$	$I_F = 150\text{A}$	—	2.4	3.2	Volts
		$I_F = 210\text{A}$	—	2.7	3.5	Volts
Threshold Voltage	$V_{TO}$	$T_j = 125^\circ\text{C}$	—	2.20	—	Volts
Slope Resistance	$r_T$	$T_j = 125^\circ\text{C}$	—	5.02	—	$\text{m}\Omega$
Reverse Recovery Time	$t_{rr}$	$V_{RM} = 600\text{V}$ ,	—	110	—	ns
Reverse Recovery Charge	$Q_{rr}$	$I_F = 210\text{A}$ , $di/dt = -600\text{ A}/\mu\text{s}$	—	13.8	—	$\mu\text{C}$
Reverse Recovery Energy	$E_{rec}$	$T_j = 125^\circ\text{C}$	—	23	—	mJ/Pulse

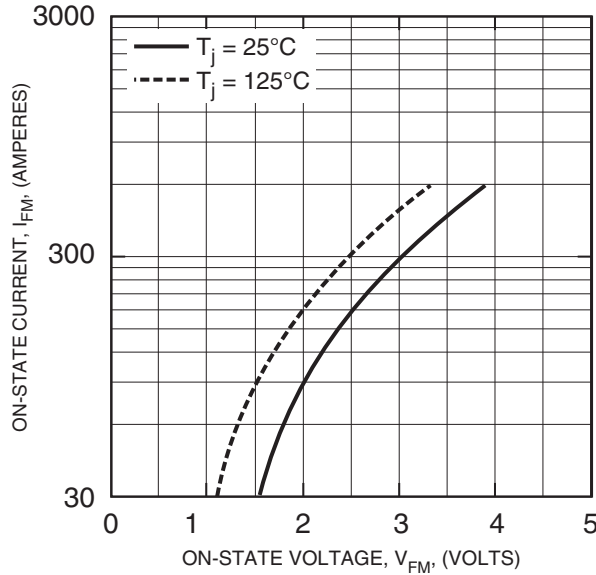
**Thermal and Mechanical Characteristics,  $T_j = 25\text{ }^\circ\text{C}$  unless otherwise specified**

Characteristics	Symbol	Test Conditions	Min.	Typ.	Max.	Units
Thermal Resistance, Junction to Case*	$R_{th(j-c)}$ Q	Per Diode	—	—	0.10	$^\circ\text{C}/\text{W}$
Contact Thermal Resistance, Case to Sink (Lubricated)*	$R_{th(c-s)}$	Per Module	—	—	0.05	$^\circ\text{C}/\text{W}$

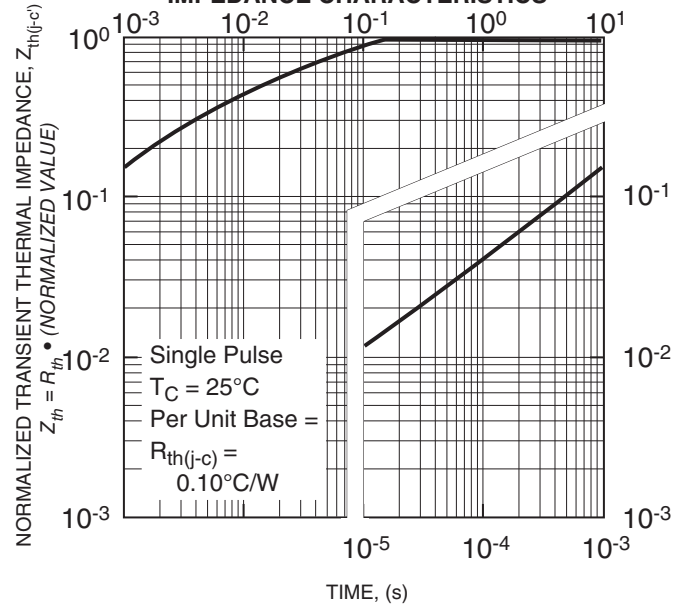
\* $T_C$ ,  $T_f$  measured point is just under the chip.

**QR\_1230R30**  
**Super Fast Recovery Dual Diode Modules**  
 210 Amperes/1200 Volts

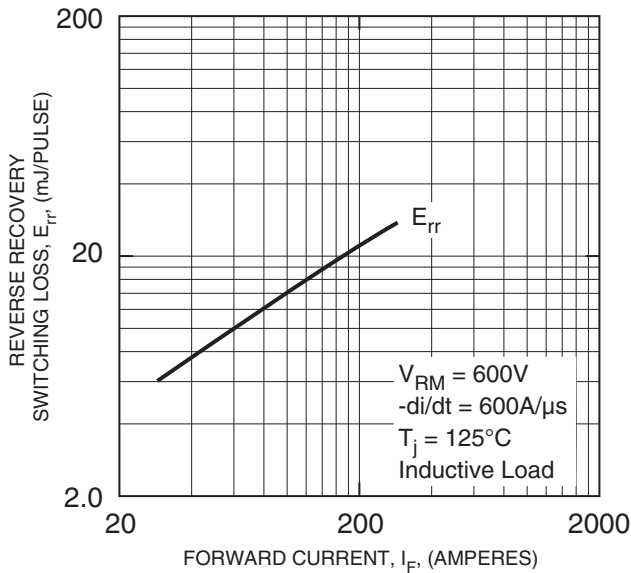
**ON-STATE CHARACTERISTICS (TYPICAL)**



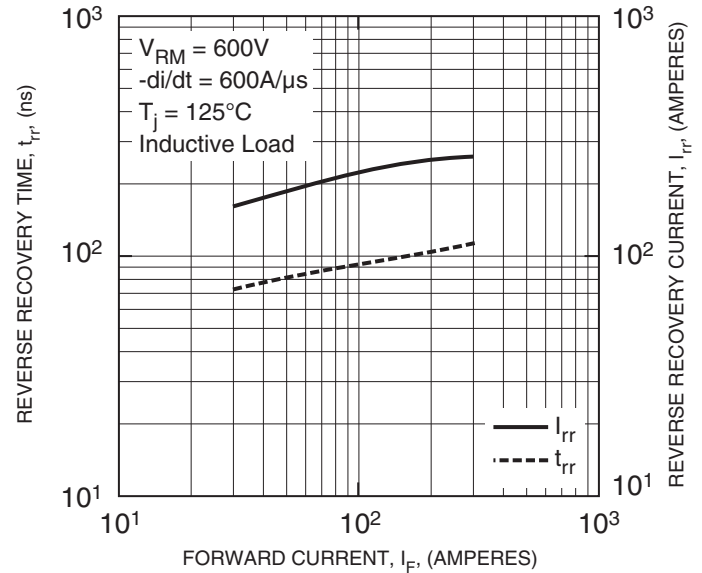
**TRANSIENT THERMAL IMPEDANCE CHARACTERISTICS**



**REVERSE RECOVERY SWITCHING LOSS CHARACTERISTICS (TYPICAL)**



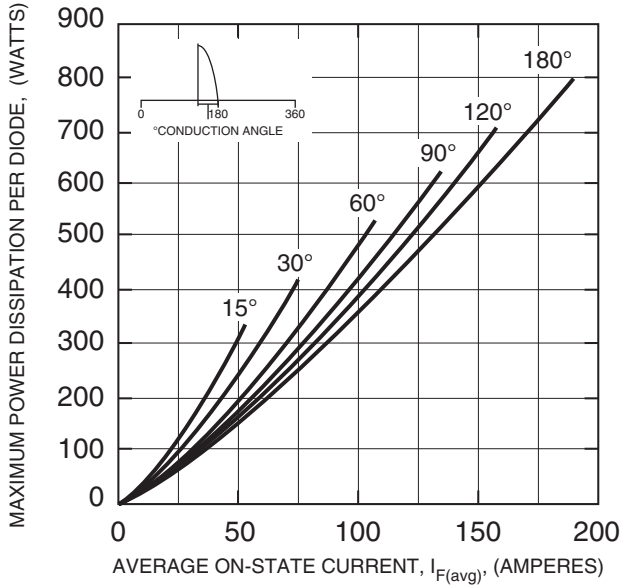
**REVERSE RECOVERY CHARACTERISTICS (TYPICAL)**



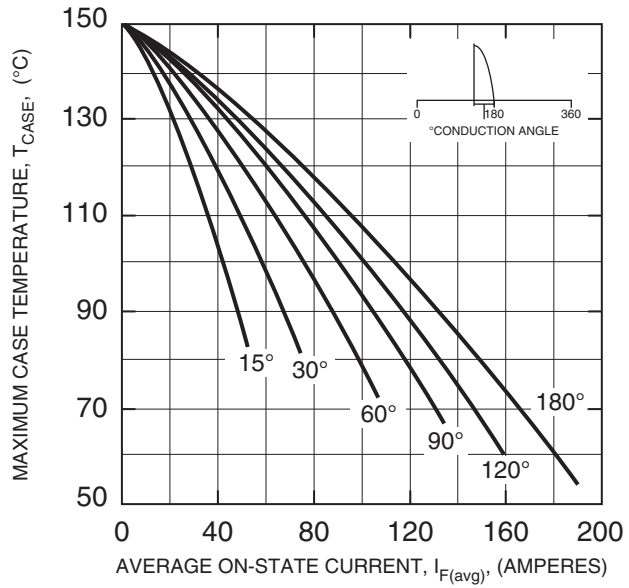
Information presented is based upon manufacturers testing and projected capabilities. This information is subject to change without notice. The manufacturer makes no claim as to the suitability of use, reliability, capability, or future availability of this product.

**QR\_1230R30**  
**Super Fast Recovery Dual Diode Modules**  
 210 Amperes/1200 Volts

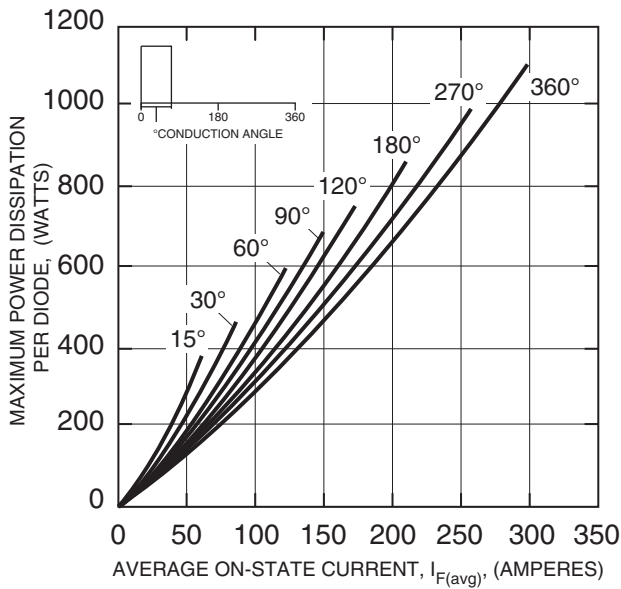
**MAXIMUM ON-STATE POWER DISSIPATION (SINUSOIDAL WAVEFORM)**



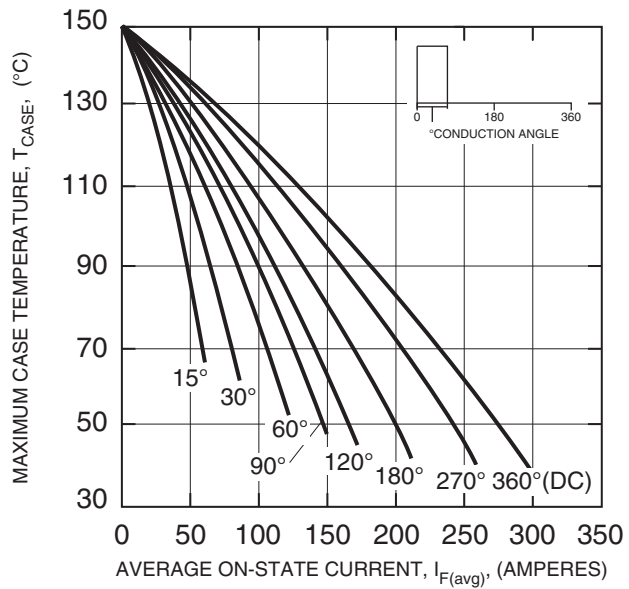
**MAXIMUM ALLOWABLE CASE TEMPERATURE (SINUSOIDAL WAVEFORM)**



**MAXIMUM ON-STATE POWER DISSIPATION (RECTANGULAR WAVEFORM)**



**MAXIMUM ALLOWABLE CASE TEMPERATURE (RECTANGULAR WAVEFORM)**



Information presented is based upon manufacturers testing and projected capabilities. This information is subject to change without notice. The manufacturer makes no claim as to the suitability of use, reliability, capability, or future availability of this product.