



Cross-connector, No. of poles: 2, Mounting type: Can be screwed on, Width: 25 mm, Rated cross-section: 35 mm<sup>2</sup>, Colour: natural

### Business data

Article number	<u>17253.0</u>
Article name	Q 2
GTIN (EAN)	4044211186531
Packaging unit	20
Quantity unit	PC
Weight per piece (not including packaging)	7 g
Weight per piece (including packaging)	7.34 g
Unit of weight	G
Customs number	85389099
Country of origin	CZ
Product description	Cross-connector
Colour	Natural

### Technical data

#### Dimensions

Length	8 mm
Width	25 mm
Hole diameter	4.1 mm
Hole spacing (mid-point to mid-point)	16 mm
Pitch size	16 mm

#### Ratings

Max. voltage	1000 V
Voltage with partition, max.	1000 V
Voltage without partition, max.	1000 V
Rated current	125 A
Rated cross-section	35 mm <sup>2</sup>
Contamination degree	3

#### Connection data

No. of poles	2
Screw head	Slotted
Screw threading	M 4
Tightening torque, min.	1.2 Nm
Tightening torque, max.	2 Nm

#### Materials

Material	Copper
Surface	Tin-plated
Surface screw	Galvanized

#### Further technical data

Mounting type	Screwable
Number of bridged terminals	2

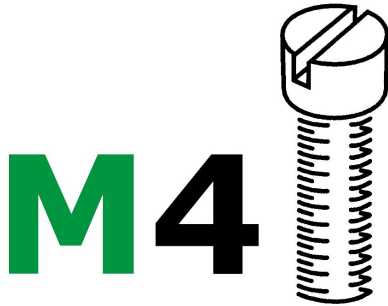
#### Environmental Product Compliance

REACH Conform	yes
REACH Reference date	2022-06-10
REACH Candidate Substance Note	No
RoHS Conform	yes

---

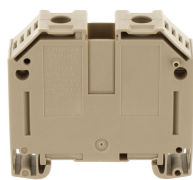
Media

---



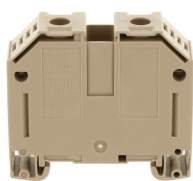
### Accessories

#### ##INVERSE##CONTA-CONNECT



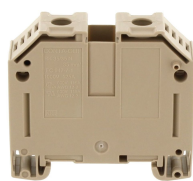
Feed-through terminal, Screw connection, Mounting type: Mounting rail TS 35/7.5, Rated cross-section: 35 mm<sup>2</sup>, Width: 16 mm, Colour: Beige

Article number	Article name	GTIN (EAN)	Packaging unit
<a href="#">17372.2</a>	RK 35/35 N/Z BG	4044211186340	20



Feed-through terminal, Screw connection, Mounting type: Mounting rail TS 35/7.5, Rated cross-section: 35 mm<sup>2</sup>, Width: 16 mm, Colour: Beige

Article number	Article name	GTIN (EAN)	Packaging unit
<a href="#">17371.2</a>	RK 35/35 N/IS BG	4044211186241	20



Feed-through terminal, Screw connection, Mounting type: Mounting rail TS 35/7.5, Rated cross-section: 35 mm<sup>2</sup>, Width: 16 mm, Colour: Beige

Article number	Article name	GTIN (EAN)	Packaging unit
<a href="#">17373.2</a>	RK 35/35 N/Z/IS BG	4044211186449	20



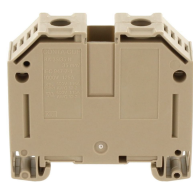
Feed-through terminal, Screw connection, Mounting type: Mounting rail TS 35/7.5, Rated cross-section: 35 mm<sup>2</sup>, Width: 16 mm, Colour: Black

Article number	Article name	GTIN (EAN)	Packaging unit
<a href="#">17376.4</a>	RK 35/35 N PA-G BK	4044211186562	20 ST



Feed-through terminal, Screw connection, Mounting type: Mounting rail TS 35/7.5, Rated cross-section: 35 mm<sup>2</sup>, Width: 16 mm, Colour: Black

Article number	Article name	GTIN (EAN)	Packaging unit
<a href="#">17377.4</a>	RK 35/35 N/IS PA-G BK	4044211186579	20 ST



Feed-through terminal, Screw connection, Mounting type: Mounting rail TS 35/7.5, Rated cross-section: 35 mm<sup>2</sup>, Width: 16 mm, Colour: Beige

Article number	Article name	GTIN (EAN)	Packaging unit
<a href="#">17370.2</a>	RK 35/35 N BG	4044211185473	20