

DWG. NO. SD 35068-9812

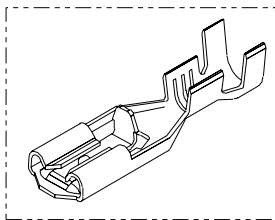
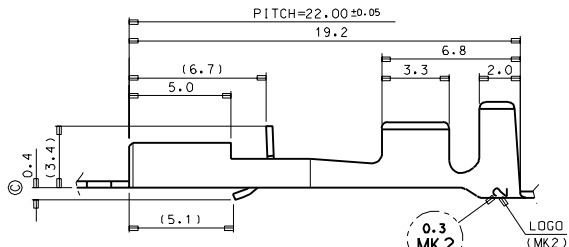
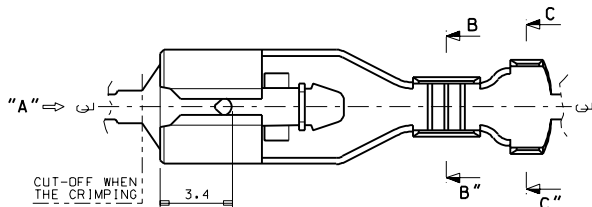
SIMILAR ITEM

PROJECT NO. 1187 P-LOCK CONN.

C

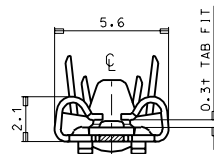
B

DO NOT SCALE DRAWING
DIMENSION IN METRIC

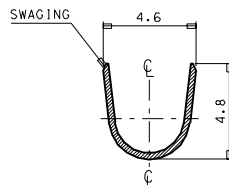
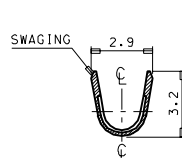


NOTES

1. MATERIAL : BRASS, 0.30 mm THICKNESS
2. FINISH : PRE-PLATED TIN
3. MATING TAB THICKNESS : 0.30 mm
4. APPLICABLE HOUSING : 35189-0110
5. RECOMMENDED LENGTH OF WIRE STRIP IS 4.4-5.0mm.
6. APPLICABLE WIRE : AWG #20-#16
INSULATION DIA. : ϕ 1.9-3.4mm



VIEW "A"



1	C
1	B
1	A
	REV
	SHT

REVISED EC NO. KDR1997-0160 DRWG. J.S.KANG 97/12/01 CHK. B.K.CHOI APPR. C.W.LEE	QUALITY SYMBOLS MAJOR CRITICAL	GENERAL TOLERANCES (UNLESS SPECIFIED) mm ± .1 INCH ± .005	SCALE 6/1 DESIGN UNITS mm INCH	DRAWN BY B. DATE J.S.KANG 97/12/01 CHECKED BY & DATE APPROVED BY & DATE	DIMENSIONS: mm INCH mm INCH mm ONLY	THIRD ANGLE PROJECTION	SHT REV REVISE ON CAD ONLY	
	DESCRIPTION C B A REV	ANGLAR: ± 1°	CAD FILENAME s35068a.dgn	MATERIAL NO. SEE NOTES	DRAWING NO. SD 35068-9812	SHEET NO. 1 of 1	TITLE: .187 MP-LOCK TM'L(M) (0.3+ TAB FIT)	
	MOLEX INCORPORATED KOREA							INCORPORATED AND SHOULD NOT BE USED WITHOUT WRITTEN PERMISSION.
	DRAFT WHERE APPLICABLE MUST REMAIN WITHIN DIMENSIONS							B