

20 19 18 17 16 15 14 13 12 11 9 8 7 6 5 4 3 2 1

M M

L L

K K

J J

I I

H H

G G

F F

E E

D D

C C

B B

A A

19 18 17 16 15 14 13 12 11 10 9 8 7 6 5 4 3 2 1

VIEW ON MATING SIDE



A = 96 STANDARD CONTACTS L = 4.5

MARKING	STANDARD
PERFORMANCE LEVEL	G/O = CONTACT AREA LEVEL I / TERMINATION TIN
FLUX PROOF	NO
FIXING CLIP	NO
DIMENSIONS	SD-85013-0001 SHT I

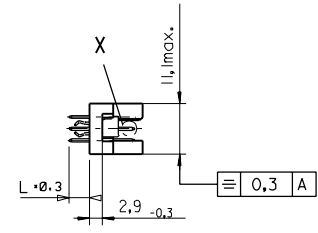
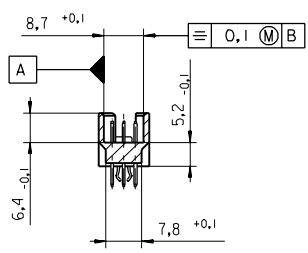
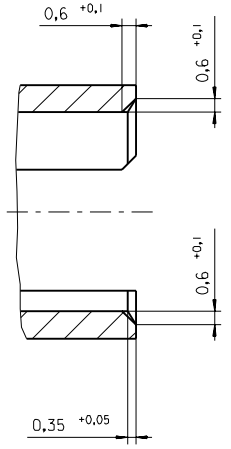
A	G/O	a1-32 b1-32 c1-32
CONTACT SYMBOL	PERFORMANCE LEVEL	CONTACT POSITION NUMBER

EC NO. I 2004-XXXX DRAWN N.S. 31/03/04 CHK'd G.L. 31/03/04 APPR. G.L. 31/03/04	QUALITY SYMBOLS MAJOR CRITICAL	GENERAL TOLERANCES: (UNLESS SPECIFIED)	SCALE	DESIGN UNITS <input checked="" type="checkbox"/> MM <input type="checkbox"/> INCH	THIRD ANGLE PROJECTION <input type="checkbox"/> 1ST ANGLE <input checked="" type="checkbox"/> 3RD ANGLE	DIMENSIONS: <input type="checkbox"/> mm <input type="checkbox"/> INCH <input checked="" type="checkbox"/> mm ONLY	SHT REV
		4 PLACES $\pm 0.$ $\pm.$	DRAWN BY & DATE N.S. 01/06/01	TITLE: 96 POS MALE CONNECTOR ACCORDING DIN 41612 STYLE R CONTACTS ARRANGEMENT			REVISE ON CAD ONLY
		3 PLACES $\pm 0.$ $\pm.$	CHECKED BY & DATE G.L. 01/06/01	MOLEX INCORPORATED			
		2 PLACES $\pm 0.$ $\pm.$	APPROVED BY & DATE G.L. 01/06/01	CAD FILENAME S850130438.S01	MATERIAL NO. 85013-0438	DRAWING NO. SD-85013-0438	SHEET NO. 1 OF 1
		1 PLACE $\pm 0.$ $\pm.$	ANGULAR: \pm	THIS DRAWING CONTAINS INFORMATION THAT IS PROPRIETARY TO MOLEX INCORPORATED AND SHOULD NOT BE USED WITHOUT WRITTEN PERMISSION.		SIZE D	
B	REV	DRAFT WHERE APPLICABLE MUST REMAIN WITHIN DIMENSIONS					

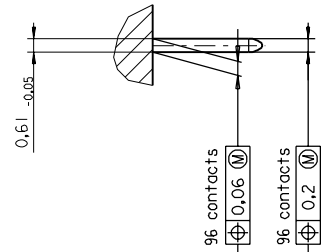
24-border.DGN REV A 96/06/12 LEVEL 6

PART NO.
DWG. NO.

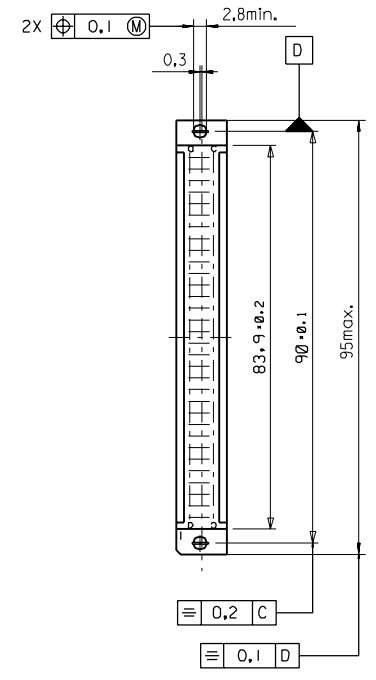
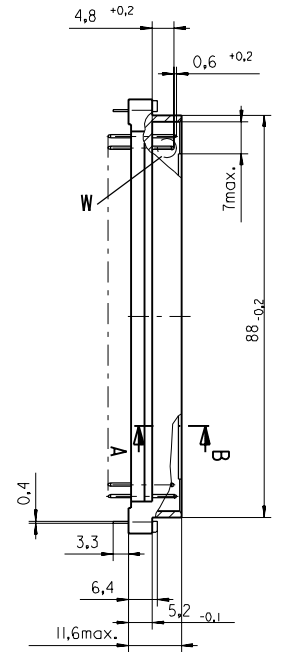
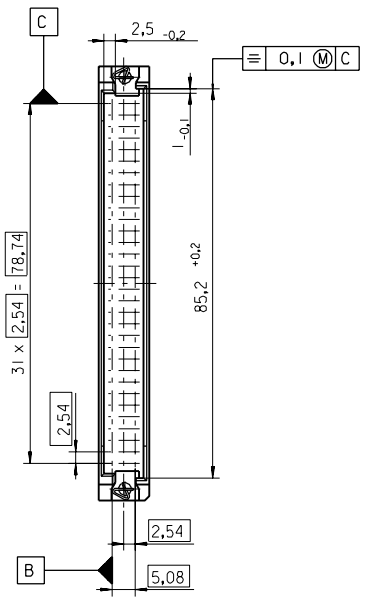
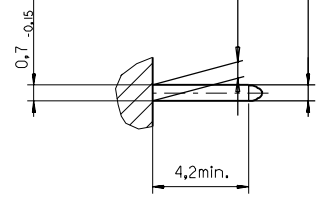
Section A - B
5:1



View X
5:1



View W
5:1



FIRST ANGLE PROJECTION		REVISE ONLY ON CAD SYSTEM		SH.	REV.
UNLESS OTHERWISE SPECIFIED TOLERANCES: ANGULAR ±2°		DRWG BY	SIGN	CAD/CAM PROJECT NAME	
INCH METRIC		Ca		85013000 611	
3 PLACE ± . ±		CHK'D BY	SIGN	THIS DRAWING CONTAINS INFORMATION THAT IS PROPRIETARY TO MOLEX INC. & SHOULD NOT BE USED WITHOUT WRITTEN PERMISSION	
2 PLACE ± . ±		KN		TITLE	
1 PLACE ± . ±		APP'D BY	SIGN	96 pos. Male connector acc. DIN 41612 Style R Dimensions	
DRAFT WHERE APPLICABLE MUST REMAIN WITHIN DIMENSIONS		SCALE		SHEET NO. DATE	
DESIGN DIMENSION <input checked="" type="checkbox"/> MM		: 1		1 OF 95/06/07	
EQUIVALENT DIMENSION <input type="checkbox"/> MM				MOLEX MOLEX EUROPE	
EQUIVALENT DIMENSION <input type="checkbox"/> IN.				SHEET NO. DATE	
IF TWO DIMENSIONS ARE SHOWN THE UPPER IS THE DESIGN DIMENSION, LOWER IS SECONDARY				1 OF 95/06/07	
first release see ECN No. 1887				PART NO. DWG NO. SIZE	
A				SDA-85013-0001 B	

VIEW ON MATING SIDE

⋄	A	A	A	A	A	A	A	A	A	A	A	A	A	A	A	A	A	A	A	A	A	A
⋄	A	A	A	A	A	A	A	A	A	A	A	A	A	A	A	A	A	A	A	A	A	A
⋄	A	A	A	A	A	A	A	A	A	A	A	A	A	A	A	A	A	A	A	A	A	A

1 2 3 4 5 6 7 8 9 10 11 12 13 14 15 16 17 18 19 20 21 22 23 24 25 26 27 28

A = 96 STANDARD CONTACTS L=4,5

Marking	Standard
Performance level	G1/0 = Contact area perform. level / Termination fin
Flux proof	no
Fixing clip	no
Dimensions	SDA-85013-0001 sht. 1
Technical Data	PS-85013-0001

Contact symbol G1/0 bl-32 bi-32 c1-32

Perform. level Contact position number

first release see ECN No. 1868	FOR PREVIOUS REVISIONS SEE MRL LIST		SH. REV.
REVISIONS	REVISIONS	REVISE ONLY ON CAD SYSTEM	THIS DRAWING CONTAINS PROPRIETARY TO MOLEX INC. & SHOULD NOT BE USED WITHOUT WRITTEN PERMISSION
LTR	SCALE	DRWG BY: Cd CHK'D BY: KN APP'D BY: SIGN:	CAD/CAM PROJECT NAME: s8501304_s31 SHEET NO.: 1 OF 1 DATE: 95/06/07
▷	IF TWO DIMENSIONS ARE SHOWN, THE UPPER IS THE DESIGN DIMENSION, LOWER IS SECONDARY	DESIGN DIMENSION <input type="checkbox"/> MM <input type="checkbox"/> IN. EQUIVALENT DIMENSION <input type="checkbox"/> MM <input type="checkbox"/> IN.	TITLE: 96 pos. Male connector acc. DIN 41612 style R contacts arrangement MOLEX EUROPE
		PART NO. 85013-0438	DWG NO. SDA-85013-0438