

20 19 18 17 16 15 14 13 12 11 9 8 7 6 5 4 3 2 1

VIEW ON MATING SIDE

○	Z	Z	A	A	A	A	A	A	A	A	A	A	A	A	A	A	A	A	A	Z	A	A	A	A	A	A	A	A	A	A		
○	Z	A	A	A	A	A	A	A	A	A	A	A	A	A	A	A	A	A	A	A	A	A	A	A	A	A	A	A	A	A		
○	Z	Z	A	A	A	A	A	A	A	A	A	A	A	A	A	A	A	A	A	Z	A	A	A	A	A	A	A	A	A	A		
	-	2	3	4	5	6	7	8	9	10	11	12	13	14	15	16	17	18	19	20	21	22	23	24	25	26	27	28	29	30	31	32

A = 89 STANDARD CONTACTS L = 2,9  
 Z = 7 FMLB CONTACTS +0,6 L = 2,9  
 S = 96 TOTAL NUMBER OF CONTACTS

MARKING	STANDARD
PERFORMANCE LEVEL	G1/O = CONTACT AREA PERFORM. LEVEL I / TERMINATION TIN
FLUX PROOF	NO
FIXING CLIP	NO
DIMENSIONS	SD-85013-0001 SHT 1

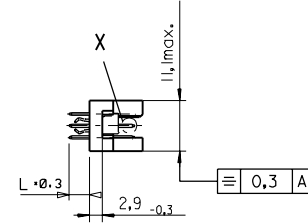
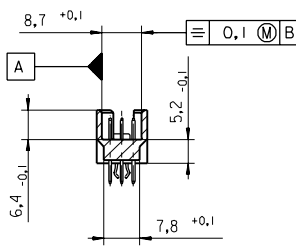
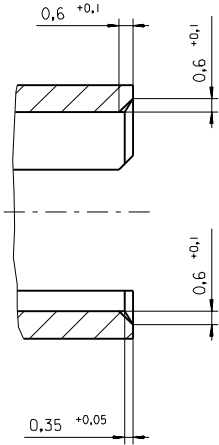
Z	G1/O	a1,2,24	b1	c1,2,24
A	G1/O	a3-23,25-32	b2-32	c3-23,25-32
CONTACT SYMBOL	PERFORMANCE LEVEL	CONTACT POSITION NUMBER		

EC NO. I 2004-XXXX DRAWN N.S. 31/03/04 CHK'd G.L. 31/03/04 APPR. G.L. 31/03/04	QUALITY SYMBOLS MAJOR $\nabla$ CRITICAL $\nabla$	GENERAL TOLERANCES: (UNLESS SPECIFIED) mm      inch	SCALE <input checked="" type="checkbox"/> mm <input type="checkbox"/> INCH	DESIGN UNITS <input checked="" type="checkbox"/> mm <input type="checkbox"/> INCH	THIRD ANGLE PROJECTION <input type="checkbox"/> mm <input checked="" type="checkbox"/> INCH	DIMENSIONS: <input type="checkbox"/> mm <input type="checkbox"/> INCH <input checked="" type="checkbox"/> mm ONLY	SHT 1 REV 1 REVISE ON CAD ONLY	
	DRAWN BY & DATE N.S. 17/09/01	4 PLACES $\pm 0, \pm$ 3 PLACES $\pm 0, \pm$ 2 PLACES $\pm 0, \pm$ 1 PLACE $\pm 0, \pm$		CHECKED BY & DATE G.L. 17/09/01	TITLE: 96 POS MALE CONNECTOR ACCORDING DIN 41612 STYLE R CONTACTS ARRANGEMENT			
	APPROVED BY & DATE G.L. 17/09/01	ANGULAR $\pm$		CAD FILENAME SD-85013-3081.S01	MATERIAL NO. 85013-3081	DRAWING NO. SD-85013-3081	SHEET NO. 1 OF 1	
	DRAFT WHERE APPLICABLE MUST REMAIN WITHIN DIMENSIONS		THIS DRAWING CONTAINS INFORMATION THAT IS PROPRIETARY TO MOLEX INCORPORATED AND SHOULD NOT BE USED WITHOUT WRITTEN PERMISSION.					

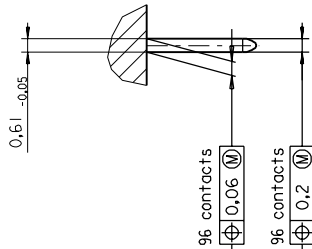
24-border.DGN REV 4 96/06/12 LEVEL 6 19 18 17 16 15 14 13 12 11 10 9 8 7 6 5 4 3 2 1

PART NO.  
DWG. NO.

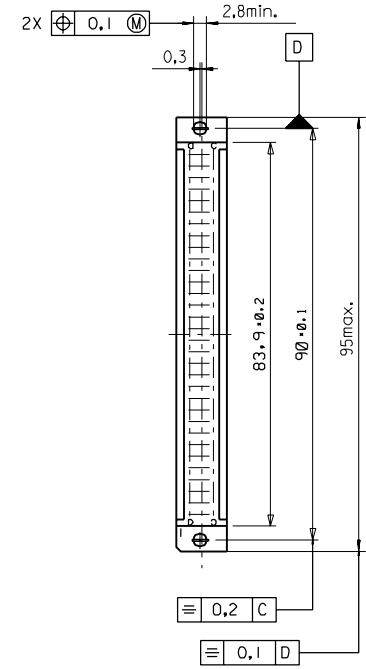
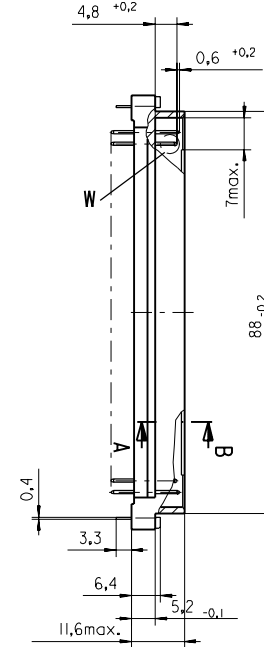
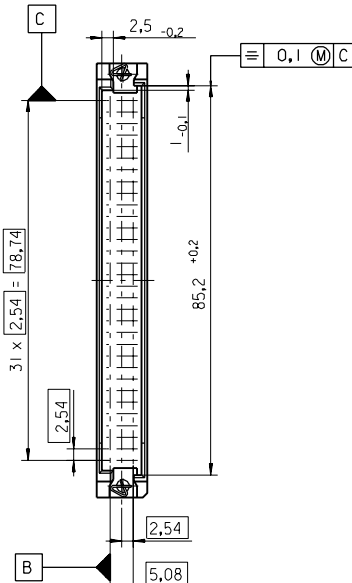
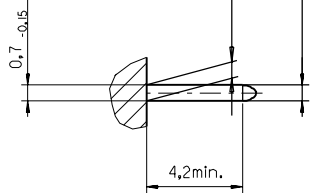
Section A - B  
5:1



View X  
5:1



View W  
5:1



FIRST ANGLE PROJECTION		REVISE ONLY ON CAD SYSTEM		SH.	REV.
UNLESS OTHERWISE SPECIFIED TOLERANCES: ANGULAR ±2°	INCH	DRWG BY	SIGN	CAD/CAM PROJECT NAME	
	METRIC	Ca		85013000 611	
3 PLACE ± . . ±		CHK'D BY	SIGN	TITLE	
2 PLACE ± . ±		KN		96 pos. Male connector acc. DIN 41612 Style R Dimensions	
1 PLACE ± . ±		APP'D BY	SIGN	SHEET NO. DATE	
DRAFT WHERE APPLICABLE MUST REMAIN WITHIN DIMENSIONS				1 OF 95/06/07	
DESIGN DIMENSION <input checked="" type="checkbox"/> MM		SCALE		MOLEX EUROPE	
EQUIVALENT DIMENSION <input type="checkbox"/> MM		! : 1		PART NO. DWG NO. SIZE	
IF TWO DIMENSIONS ARE SHOWN THE UPPER IS THE DESIGN DIMENSION, LOWER IS SECONDARY				SDA-85013-0001 B	

View on mating side

○	Z	A	A	A	A	A	A	A	A	A	A	A	Z	A	A	A	A	A	A
△	Z	A	A	A	A	A	A	A	A	A	A	A	A	A	A	A	A	A	A
○	Z	A	A	A	A	A	A	A	A	A	A	Z	A	A	A	A	A	A	A

1 2 3 4 5 6 7 8 9 10 11 12 13 14 15 16 17 18 19 20 21 22 23 24 25 26 27 28 29 30 31 32 33 34 35 36 37 38 39 40 41 42 43 44 45 46 47 48 49 50 51 52 53 54 55 56 57 58 59 60 61 62 63 64 65 66 67 68 69 70 71 72 73 74 75 76 77 78 79 80 81 82 83 84 85 86 87 88 89 90 91 92 93 94 95 96 97 98 99 100

A = 89 standard contacts L=2,9  
 Z = 7 FMLB contacts +0,6 L=2,9  
 S = 96 total number of contacts

Marking	Standard
Performance level	G1/0 = Contact area perform. level I / Termination tin
Flux proof	no
Fixing clip	no
Dimensions	SDA-85013-0001 sht.1
Technical Data	PS-85013-0001

Z	G1/0	a1,2,24	b1	c1,2,24
A	G1/0	a3-23,25-32	b2-32	c3-23,25-32
Contact symbol	Perform. level	Contact position number		

first release see ECN No. 2362	REVISIONS	FOR PREVIOUS REVISIONS SEE MRI LIST
△	LTR	

UNLESS OTHERWISE SPECIFIED TOLERANCES: ANGULAR ±2°	DRWG BY	SIGN
3 PLACE ± . INCH METRIC	Cd	
2 PLACE ± .	CHK'D BY	SIGN
1 PLACE ± .	KN	
DRAFT WHERE APPLICABLE MUST REMAIN WITHIN DIMENSIONS	APP'D BY	SIGN
DESIGN DIMENSION <input type="checkbox"/> MM <input type="checkbox"/> IN.	JB	
EQUIVALENT DIMENSION <input type="checkbox"/> MM <input type="checkbox"/> IN.	SCALE	
IF TWO DIMENSIONS ARE SHOWN THE UPPER IS THE DESIGN DIMENSION, LOWER IS SECONDARY		

REVISE ONLY ON CAD SYSTEM	SH.	REV.
CAD/CAM PROJECT NAME	THIS DRAWING CONTAINS INFORMATION THAT IS PROPRIETARY TO MOLEX INC. & SHOULD NOT BE USED WITHOUT WRITTEN PERMISSION	
TITLE	96 pos. Male connector acc. DIN 41612 style R contacts arrangement	
	MOLEX EUROPE	SHEET NO. DATE 1 OF 1 96/12/16
PART NO.	85013-3081	DWG NO. SDA-85013-3081
		SIZE A