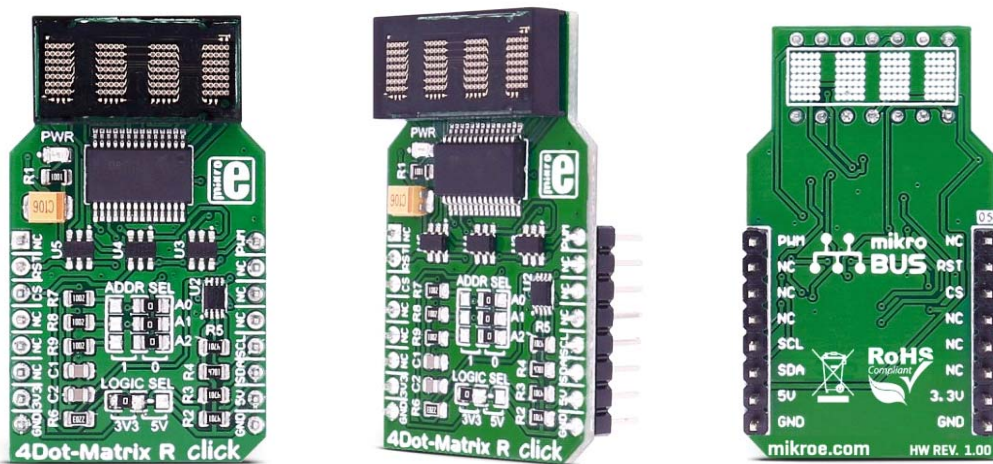
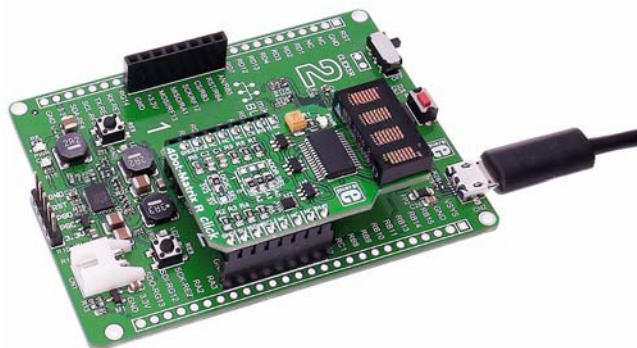


4Dot-Matrix R click

PID: MIKROE-2706



4Dot-Matrix R click allows you to display 4 characters of 5x7 dot size. The click is designed to run on either 3.3V or 5V power supply. It communicates with the target microcontroller over I2C interface, with additional functionality provided by the following pins on the mikroBUS™ line: RST, CS, PWM.



How 4Dot-Matrix R click works

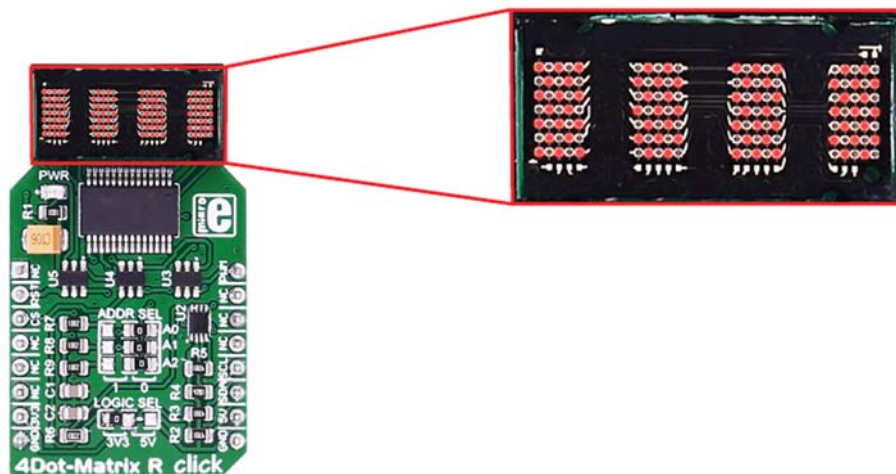
The SLO2016 module is paired up with the MCP23017 I2C port expander for easier use and minimal command lines.

Data is sent via the I2C expander. D0-D6 are used to select ASCII character from internal memory. A0 and A1 bits are used to select which place takes which character (1,2,3,4).

Detailed instructions are provided in the modules datasheet. The PWM pin is intended for blanking the display, and it can also be used for dimming the display.

The CLR function clears the ASCII characters RAM.

SLO2016 features



SLO2016 is a 4-Digit 5x7 Dot Matrix Alphanumeric **intelligent display**, with many built-in functions that will save your time. The integrated circuit contains memory, a 128 ASCII ROM decoder, multiplexing circuitry and drivers.

The character set consists of **128 special ASCII characters** for English, German, Italian, Swedish, Danish, and Norwegian. So, you don't need to build a character set yourself.


You also have direct access to each digit independently and asynchronously.

Specifications

Type	LED Matrix
Applications	4 characters of 5x7 dots display to your device
On-board modules	SLO2016 5 x 7 dot matrix display, MCP23017 port expander
Key Features	Built-in Memory, Built-in Character Generator, Built-in Multiplex and LED Drive Circuitry, Superior ESD Immunity, readability up to eight feet (2.5m)
Key Benefits	128 Special ASCII Characters for English, German, Italian, Swedish, Danish, and Norwegian.
Interface	I2C
Input Voltage	3.3V or 5V
Click board size	M (42.9 x 25.4 mm)

Pinout diagram

This table shows how the pinout on **4Dot-Matrix R click** corresponds to the pinout on the mikroBUS™ socket (the latter shown in the two middle columns).

Notes	Pin					Pin	Notes
	NC	1	AN	PWM	16	PWM	Display blanking and PWM
Clear module RAM	RST	2	RST	INT	15	NC	
	NC	3	CS	TX	14	NC	
	NC	4	SCK	RX	13	NC	
	NC	5	MISO	SCL	12	SCL	I2C clock
	NC	6	MOSI	SDA	11	SDA	I2C data
Power supply	+3.3V	7	3.3V	5V	10	+5V	Power supply
Ground	GND	8	GND	GND	9	GND	Ground

Jumpers and settings

Designator	Name	Default Position	Default Option	Description
ADDR SEL	A0/A1/A2	0	0	I2C slave address selection
LOG SEL	Interface power supply		5V	Logic Level Voltage Selection 3V3/5V, left position 3V3, right position 5V

4Dot-Matrix R click features a jumper for setting the voltage logic level. By default, it's soldered to a 5V position.

Programming

Code examples for 4Dot-Matrix R click, written for MikroElektronika hardware and compilers are available on Libstock.

Code snippet

This code snippet demonstrates the usage of a 4DotMatrix R click on EasyMx PRO v7 for STM32 ARM with STM32F107VCT6 .

After the initialization, several pieces of text are displayed in a loop, showing the functionalities of the click board and its library. First, some text is slid in from the right. Next, a sequence of numbers is displayed in succession. Finally, the display is faded out and in using PWM.

```
01: ...
02:
03: // Main function.
04: void main()
05: {
06:     int8_t i;
07:     uint8_t length;
08:
09:     // Initialize the system.
10:     systemInit();
11:
12:     length = strlen(text) - 3;
13:     while (1)
14:     {
15:         // Slide some text in from the right.
16:         for (i = 0; i < length; i++)
```

```

17:     {
18:         C4DOT_writeText(text + i);
19:         Delay_ms(150);
20:     }
21:
22:     // Clear and delay.
23:     C4DOT_clearDisplay();
24:     Delay_ms(500);
25:
26:     // Write some numbers on the display.
27:     for (i = -20; i <= 20; i++)
28:     {
29:         C4DOT_writeIntDec(i);
30:         Delay_ms(150);
31:     }
32:
33:     // Clear and delay.
34:     C4DOT_clearDisplay();
35:     Delay_ms(500);
36:
37:     // Fade some text out and in.
38:     C4DOT_writeIntDec(1234);
39:     for (i = 50; i >= 0; i--)
40:     {
41:         PWM_TIM2_Set_Duty(
42:             (pwmPeriod / 50) * i, _PWM_NON_INVERTED, _PWM_CHANNEL1);
43:         Delay_ms(50);
44:     }
45:     for (i = 0; i <= 50; i++)
46:     {
47:         PWM_TIM2_Set_Duty(
48:             (pwmPeriod / 50) * i, _PWM_NON_INVERTED, _PWM_CHANNEL1);
49:         Delay_ms(50);
50:     }
51:
52:     // Clear and delay.
53:     C4DOT_clearDisplay();
54:     Delay_ms(500);
55: }
56: }

```