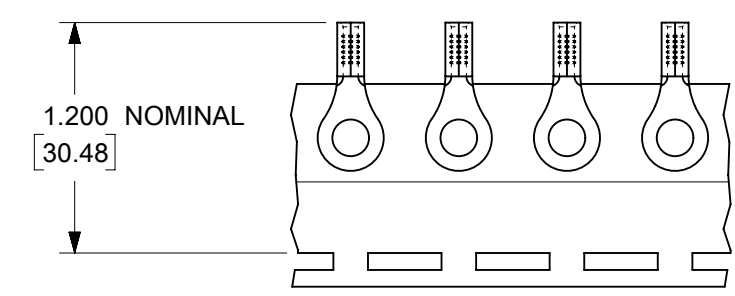
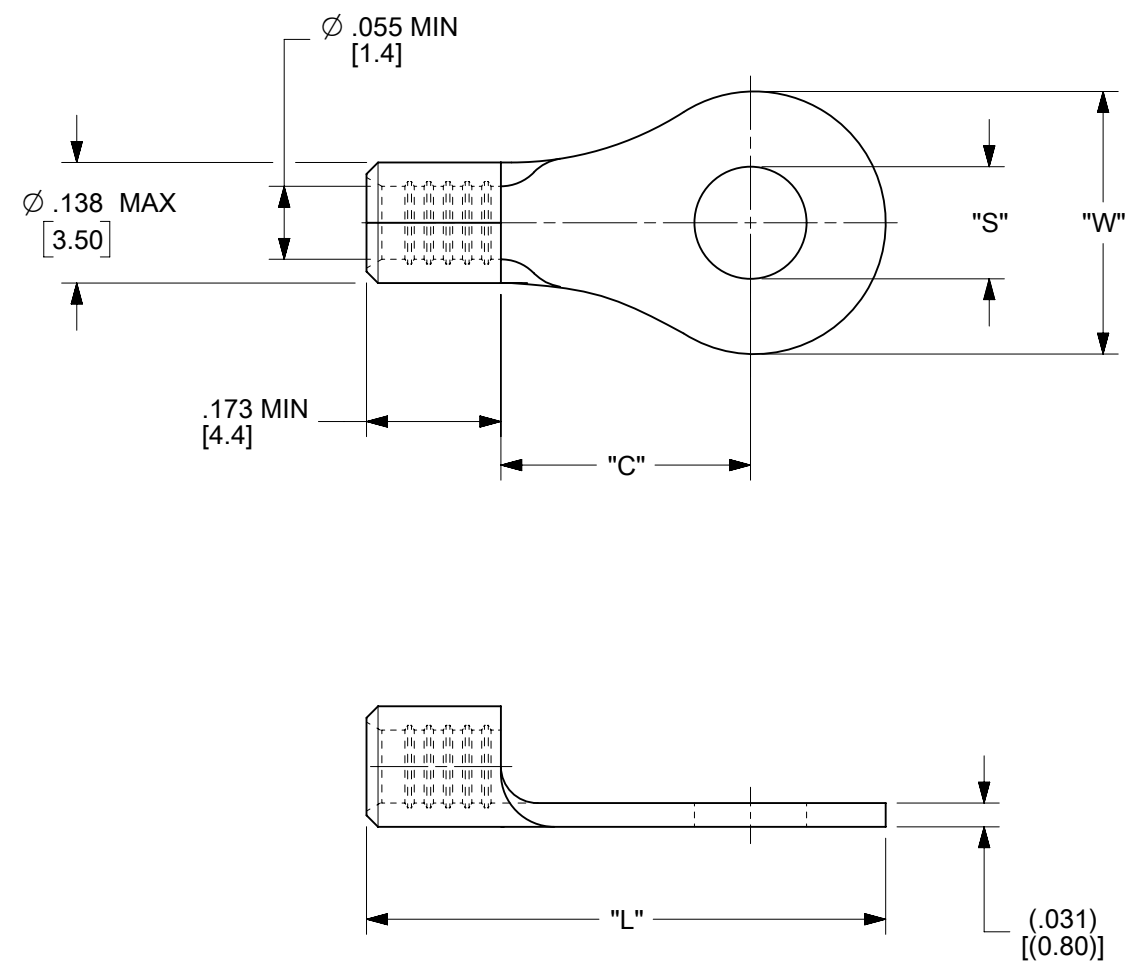


LOOSE PIECE		TAPE MOUNTED		STUD SIZE	DIMENSIONS			
MATERIAL NO.	ENG. NO.	MATERIAL NO.	ENG. NO.		"S" ±.007/0.18	"W" MAX	"C" MIN	"L" MAX
192030486	A-S-122-14	192030005	A-S-122-14T	1/4"	.256/6.50	.467/11.86	.427/10.85	.894/22.71
192030483	A-S-132-06	192030011	A-S-132-06T	06	.146/3.71	.270/6.86	.238/6.05	.611/15.52
192030485	A-S-132-08	192030014	A-S-132-08T	08	.169/4.29	.270/6.86	.238/6.05	.611/15.52
192030387	A-S-133-10	192030016	A-S-133-10T	10	.209/5.31	.325/8.26	.270/6.86	.666/16.92



PARTS ON TAPE

- NOTES:
1. MATERIAL: STEEL
  2. WIRE SIZE: 22-18 AWG (0.25-1.5 MM<sup>2</sup>)
  3. FINISH: NICKEL PLATED WITH OPTIONAL COPPER FLASH UNDERPLATING, IS ALLOWED FOR IMPROVED ADHESION.
  4. PARTS ARE ROHS COMPLIANT.
  5. AMBIENT OPERATING TEMPERATURE UP TO 900 °F (483 °C).

C1

THIS DRAWING CONTAINS INFORMATION THAT IS PROPRIETARY TO MOLEX ELECTRONIC TECHNOLOGIES, LLC AND SHOULD NOT BE USED WITHOUT WRITTEN PERMISSION									
FUNCTIONAL SYMBOLS	FA = 0	IN/MM	SCALE	CURRENT REV DESC: REMASTERED IN ECTR AND UPDATED NOTE					
	FE = 0		4:1	<b>molex</b> RING TONGUE TERMINAL, 22-18 AWG, KRIMPTITE, 900 DEG F (483 DEG C)					
FD = 0									
GENERAL TOLERANCES (UNLESS SPECIFIED)		MM	INCH	EC NO: 708789 DRWN: PAWANC CHKD: DMYRICK APPR: JMACNEIL INITIAL REVISION: DRWN: EHILE APPR: JMACNEIL					
DIVISIONAL SYMBOLS		4 PLACES ±	3 PLACES ±	2 PLACES ±	1 PLACE ±	0 PLACES ±	ANGULAR TOL ± °	2022/05/12 2022/06/01 2022/06/02 2006/09/22 2006/09/22	
DRAFT WHERE APPLICABLE MUST REMAIN WITHIN DIMENSIONS		THIRD ANGLE PROJECTION		DRAWING	SERIES	MATERIAL NUMBER	CUSTOMER	DOCUMENT NUMBER	DOC TYPE   DOC PART   REVISION
		B-SIZE		19203	SEE CHART	GENERAL MARKET	SD-19203-036	PSD	001   C1
									SHEET NUMBER
									1 OF 1